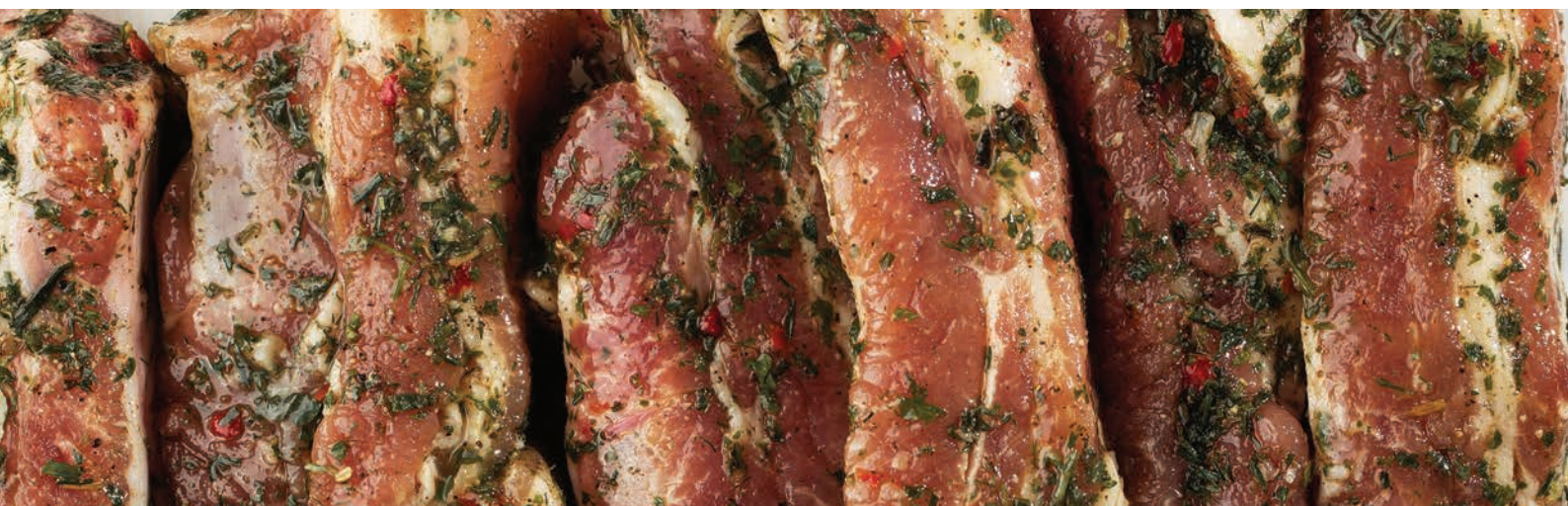




MEAT PROCESSING

# Thompson 500 Vacuum Tumbler





## Standard Technical Specifications

<b>Tumbler Capacity</b>	200kg
<b>Vacuum Pump Capacity</b>	40m <sup>3</sup> /h (2hp/1.5kW)
<b>Voltage</b>	415V 10A
<b>Machine Size (W x L x H)</b>	1490 x 910 x 1660mm <sup>3</sup>
<b>Dimensions</b>	960 x 860 x 765mm <sup>3</sup>
<b>Machine Weight</b>	480kg

Thompson Vacuum Tumblers are constructed with heavy duty stainless steel, BUSCH vacuum pumps with liquid trap, variable speed, continuous vacuum and reverse discharge function.

Great for marinated product, improved quality, increased productivity and higher profit margins.



Modifications made to the machine at time of purchase may change the technical specifications.