



MEAT PROCESSING

Thompson 4300C Mixer Mincer & 200lt Euro Bin Hoist





Standard Technical Specifications

Cutting Size	#56
Hopper Size	452lt
Mix Capacity	300kg / 1.5 x 200L bin
Primary Cut - 13mm	4,000kg/hr
Secondary Cut - 4mm	2,000kg/hr
Bowl Diameter x Length	594 x 895mm
Mixer Motor	4 kw
Mince Motor	15 kw - 2 speed 20HP
Loading Height	1700mm
Power	415V 40A
Floor Space	1513 x 1674mm
Optional	Interlocking Safety Guard, Foot Pedal

Used extensively in high production facilities the 4000 Series mixer mincer is renowned for its outstanding performance and reliability.

It features a strong structured framework supporting a thick gauge mixing bowl and panels that are fully seam welded on both the inside and outside of the bowl.

- 4300-56 raised machine – 400L bowl 56" Size cutting head
- Manufactured from high quality stainless steel
- Thick gauge mixing bowl and panels that are fully seam welded both inside and outside the bowl

All models specifically incorporate the "smart design" mixing bowl and paddle and are finished with smooth hygienic surfaces to panels and welds to achieve a clean bowl on product discharge and ease the cleaning down process at the end of production.

The mixing paddle and mince transmission are powered with independent geared motor drives. no more oily greasy chains, no more continual maintenance of pulleys and belt drives.

Smooth, compact and quiet the heavy duty drives are very efficient in transmitting maximum power from large HP motors.

Featuring a standard 2 speeds on the feedscrew drive with high torque on low speed. The feed screw feeds directly into the machine and the lid is operated pneumatically.

Modifications made to the machine at time of purchase may change the technical specifications.



Standard Technical Specifications

Operating Power	415V / 10A
Tipping Height Option 1	1700 - 2200mm
Tipping Height Option 2	1900 - 2400mm
Lift time	6 - 8 seconds
Mobile Frame	Optional

The Stainless Steel Column Hoist is designed for lifting large 200L Bins up to 2.4m and can be incorporated to feed many types of machines.

The Viking 200Lt Bin Hoist is a basic lift model designed for 200 litre bins up to 2.4m, with a maximum capacity of 350kg. This standard column lift can be fitted with a wide selection of options.

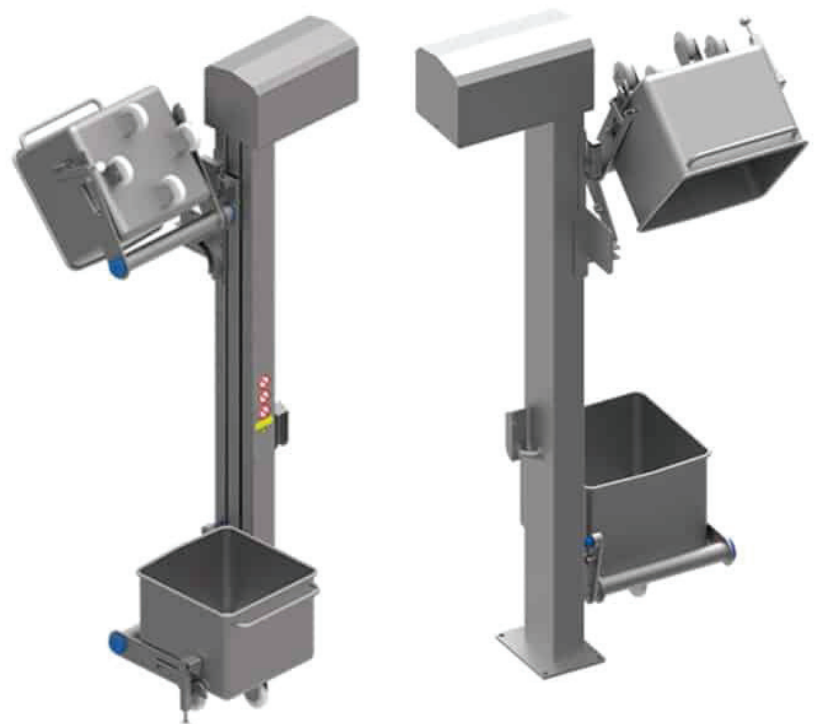
This lift can easily be customised to your production or requirements.

It allows for straight or sideways tipping and can easily be adjusted also after installation.

Standard tipping angle is 120° and tipping height can be individually adjusted by 5 steps of 100mm.

Further specifications:

- 1" nickel-plated chain
- Spring activated bin lock
- Mechanical anti-fall security system
- Stainless steel construction



Modifications made to the machine at time of purchase may change the technical specifications.