



MEAT PROCESSING

Thompson 4200 Mixer Mincer & 200lt Euro Bin Hoist





Standard Technical Specifications

Cutting Size	#56
Hopper Size	300L
Mix Capacity	200kg
Primary Cut - 13mm	4,000kg/hr
Secondary Cut - 4mm	2,000kg/hr
Bowl Diameter x Length	594 x 895mm
Floor Space	1840 x 904mm
Loading Height	1722mm
Mix Motor	3HP 2.2kW
Grinding Motor	20HP 15kW
2 Speed Mincing	Standard
Power	415V 40A

Incorporating all of the strength and features of the 4000 Series the Thompson 4200 Mixer Mincer has been designed and constructed to withstand the higher forces and demands of processing hard frozen product.

The construction of the heavy duty reinforced bowl and paddles have been structurally engineered to process tempered blocks size of 150 x 150 x 400mm at -1°C. Frozen blocks of meat 50mm cube/ flaked at -10°C through a minimum hole plate of 8mm diameter.

The frozen feedscrew is uniquely designed with an infeed bellow in the channel to the barrel.

This bellow, incorporated with the specific flight design to the feedscrew, cuts the product into small pieces and feeds to the cutting head.

Powerful motors with high torque transmissions achieve high production rates on coarse mince with a hard, dry product.

Modifications made to the machine at time of purchase may change the technical specifications.



Standard Technical Specifications

Operating Power	415V / 10A
Tipping Height Option 1	1700 - 2200mm
Tipping Height Option 2	1900 - 2400mm
Lift time	6 - 8 seconds
Mobile Frame	Optional

The Stainless Steel Column Hoist is designed for lifting large 200L Bins up to 2.4m and can be incorporated to feed many types of machines.

The Viking 200Lt Bin Hoist is a basic lift model designed for 200 litre bins up to 2.4m, with a maximum capacity of 350kg. This standard column lift can be fitted with a wide selection of options.

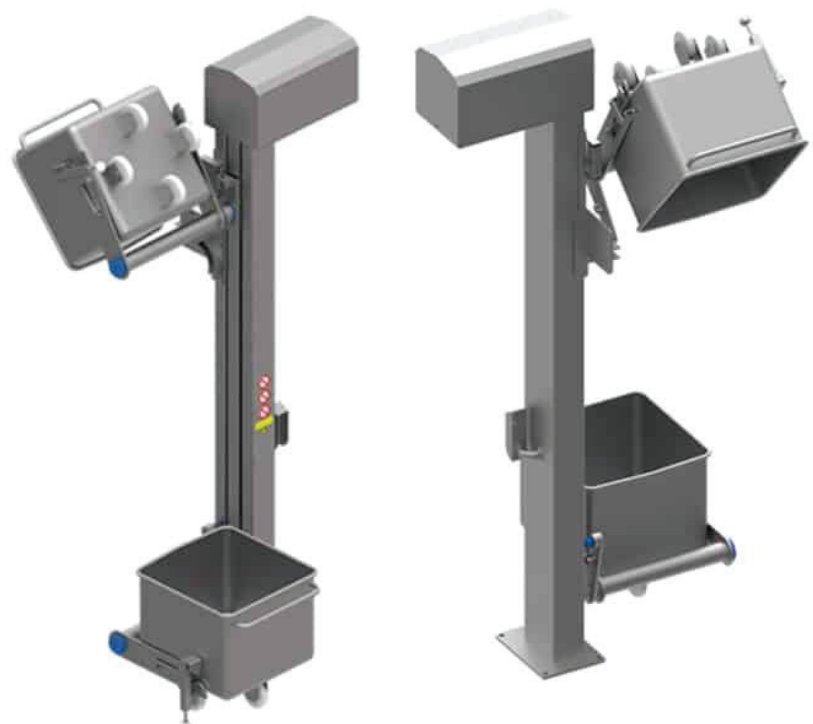
This lift can easily be customised to your production or requirements.

It allows for straight or sideways tipping and can easily be adjusted also after installation.

Standard tipping angle is 120° and tipping height can be individually adjusted by 5 steps of 100mm.

Further specifications:

- 1" nickel-plated chain
- Spring activated bin lock
- Mechanical anti-fall security system
- Stainless steel construction



Modifications made to the machine at time of purchase may change the technical specifications.