



COOKING EQUIPMENT

Smoke Rite 1080 Smoke Oven



The Smoke Rite 1080 Oven is manufactured from high grade 304 stainless steel. (Internal & external)

The Microprocessor Controller is user friendly and stores 99 user set smoking, drying, cooking times & recipes.

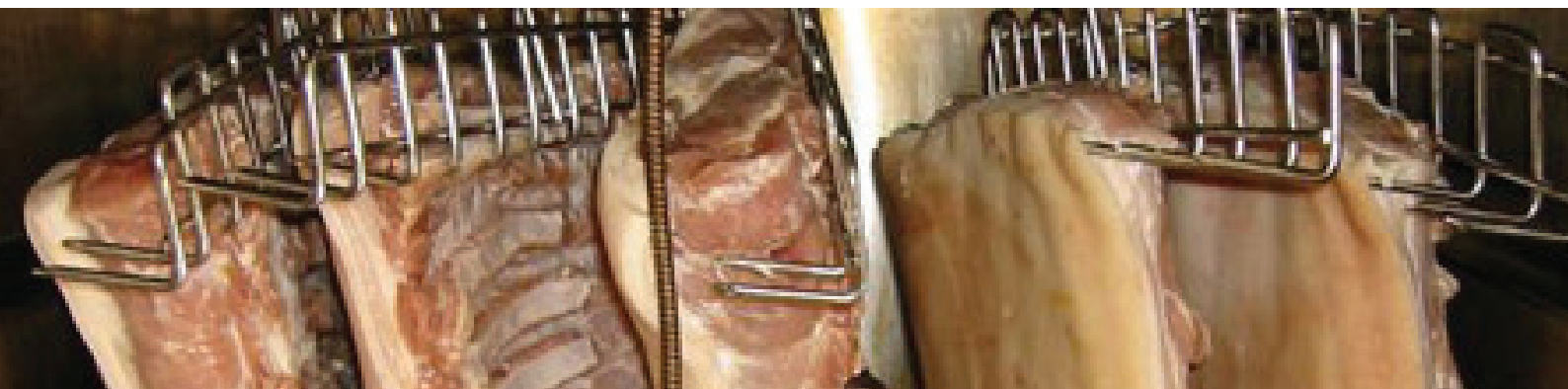


Standard Technical Specifications

Model	1080
Capacity	6 - 8 Hams approx.
Dimensions (Internal)	660 x 660 x 1065mm
Dimensions (External)	825 x 870 x 1695mm
Standard Features	200°C Temperature, Internal Drip Tray
Optional Features	Single Phase, Auto Vents, External Control Keyboard, Oven Connect Program, Product Shower, Cold Smoke
Power	415V 20A 5 Pin

Programmable features include:

- Steam Generation
- Oven and Core Temperature
- Smoke Time
- Delayed Starting
- Preheat



Modifications made to the machine at time of purchase may change the technical specifications.